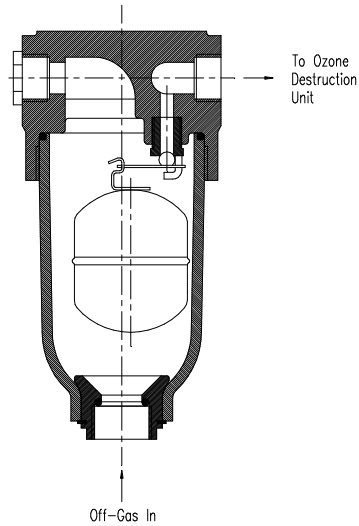


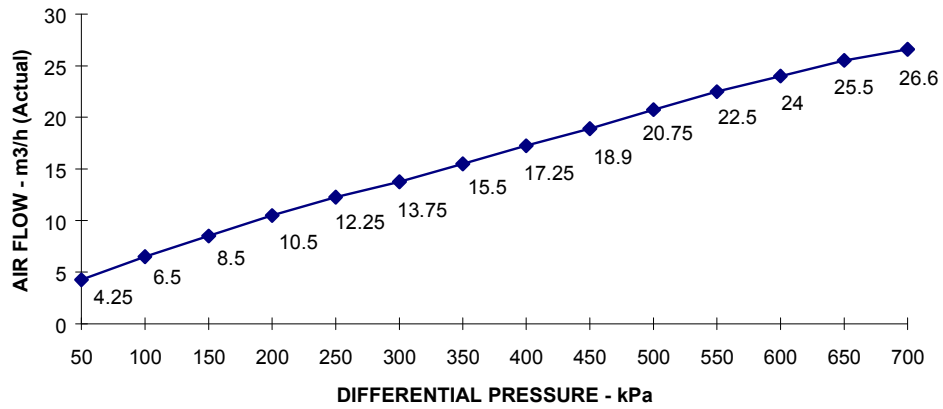
# Venting Valves 1/8"

## Automatic Ozone Off-Gas Venting Valves

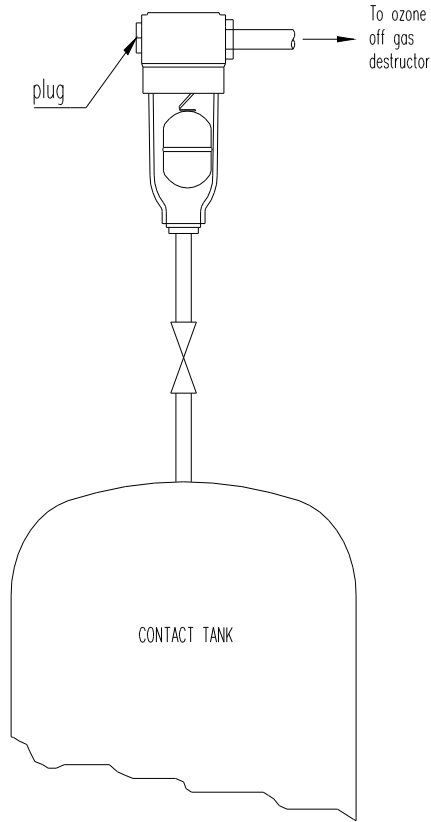


PART NO: OB-1-000003  
 MAX. VENT RATE : 27m<sup>3</sup>/h  
 MAX. TEMP : 30°C

MAX. DIFFERENTIAL PRESSURE : 700 kPa  
 MAX. STATIC PRESSURE : 1000kPa

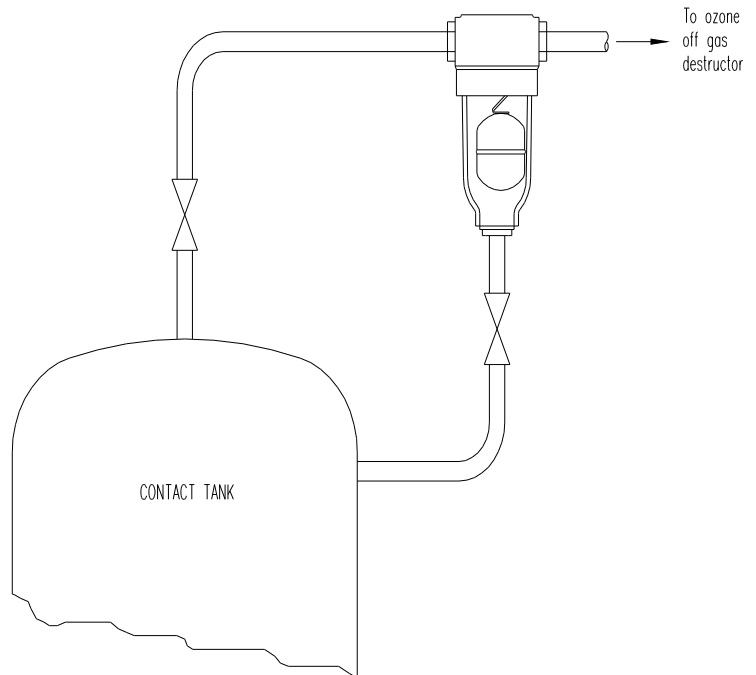


## Suggested Installation Methods



Installation Method 1.

For simple off gas venting.  
**Note:** The full venting capacity of the valve will not be achieved with this installation method. Derate the valve venting rate by 50%.



Installation Method 2.

For continuous venting with equilisation line.  
To be used where large amounts of off gas must be vented.



**WATERTEC**  
**Engineering Pty Ltd**

**Australia**

Waterotec Engineering Pty. Ltd  
P.O. Box 628  
Waterford,  
Brisbane, QLD  
Australia, 4133  
Tel: +61-(0)7-3287-1288  
Fax: +61-(0)7-3287-2800  
Web: [www.waterotecengineering.com](http://www.waterotecengineering.com)  
Email: [sales@waterotecengineering.com](mailto:sales@waterotecengineering.com)

**Malaysia**

Waterotec (M) Sdn Bhd  
Lot 5 Jalan Perusahaan 3/3,  
Batu 20, 48000 Rawang  
Selangor Darul Ehsan  
West Malaysia  
Tel: +603 6092 9029  
Fax: +603 6092 9025  
Web: [www.waterotecengineering.com](http://www.waterotecengineering.com)  
Email: [sales@waterotec.com](mailto:sales@waterotec.com)