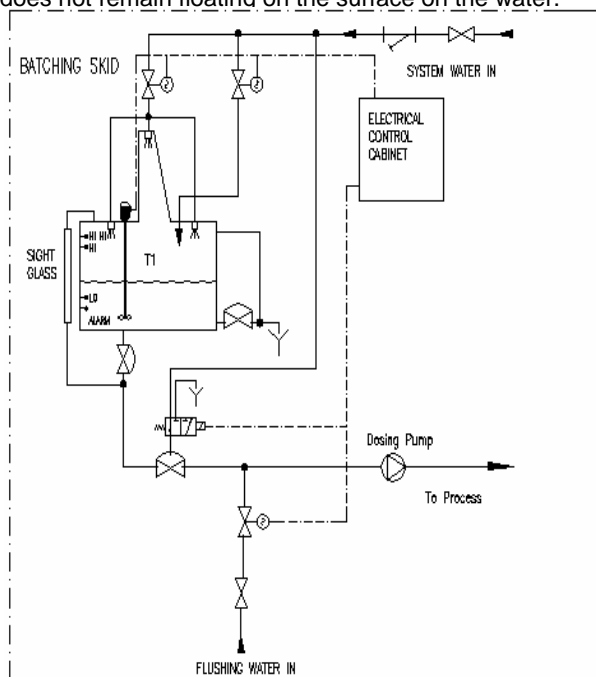
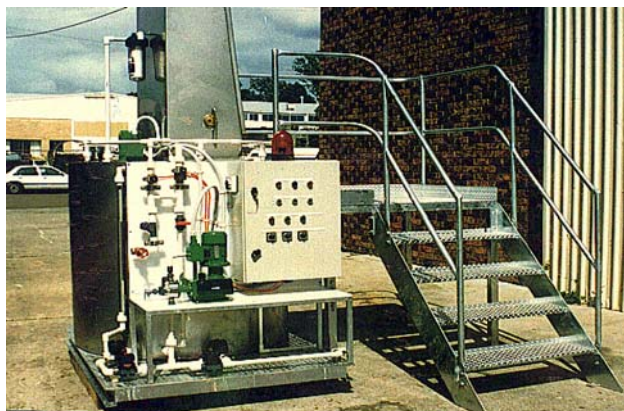


POWDER ACTIVATED CARBON DOSING SYSTEM

PAC Batching & Dosing

The Watertec Carbon Preparation and Dosing System consists of two primary items. The first being the unloading, dosing and batching system which is fully skid mounted, pre-wired and complete with all necessary pipe work, fittings and valves. The second item is the stairs, unloading platform and carbon storage platform complete with safety rails.

With this system the slurry mixing tank and bag unloader are an integral dust tight unit, where a carbon bag is secured in the bag unloader, the bag is cut manually and the door is closed and latched. The carbon is then emptied into the slurry tank. Water sprays incorporated in the bag loader and slurry tank eliminate and settle the dust and wet the carbon so that it does not remain floating on the surface on the water.



Features of the Watertec PAC Dosing System

- Dust seal prevents any escape of fine carbon dust.
- Agitator to ensure carbon slurry is always effectively mixed and in suspension.
- Graduated sight-glass to observe the level of prepared carbon slurry in the mixing tank and used for metering pump calibration.
- Dust filter to collect any fine dust particles that may arise from the batching process.
- Stainless steel slurry mixing tank with Agitator & level controls.
- Automatic flushing system to flush out dosing pump and associated pipe work.
- Allidos KM Hydraulic piston dosing pump.
- Automatic dilution water feed and control system.
- Individual systems can be designed to suit your space or special requirements.
- This arrangement requires minimal on site electrical and plumbing installation and also minimal space.
- Local electrical control panel.
- All equipment located on a single skid.
- Long plant life.

Included on the dosing rig is an Allidos Hydraulic Piston diaphragm pump, which we recommend as the most suitable type of metering pump for this

application. This pump is fitted with a stainless steel head and valve assembly, due to the abrasive nature of the PAC. The pump also incorporates an internal pressure relief valve, which actuates, should a blockage occur in either the suction, discharge or head cavities thus safeguarding the equipment including the pump from damage.



Watertec Engineering Pty Ltd

A.B.N. 76 108 009 972

P.O. Box 628

Waterford, BRISBANE QLD

Australia 4133

Tel: +61 (0) 7 3287 1288

Fax: +61 (0) 7 3287 2800

Email: sales@watertecengineering.com

Website: www.watertecengineering.com



Waterotec (M) Sdn. Bhd.

No 21, jalan Kenanga 6, Seksysn BB11,

Bandar Bukit Beruntung, 48300 Rawang

Selangor Darul Ehsan,

West Malaysia

Tel: +603-6028 5168

Fax: +603-6028 3288

Email: waterotec@myjaring.net

Website: www.watertecengineering.com